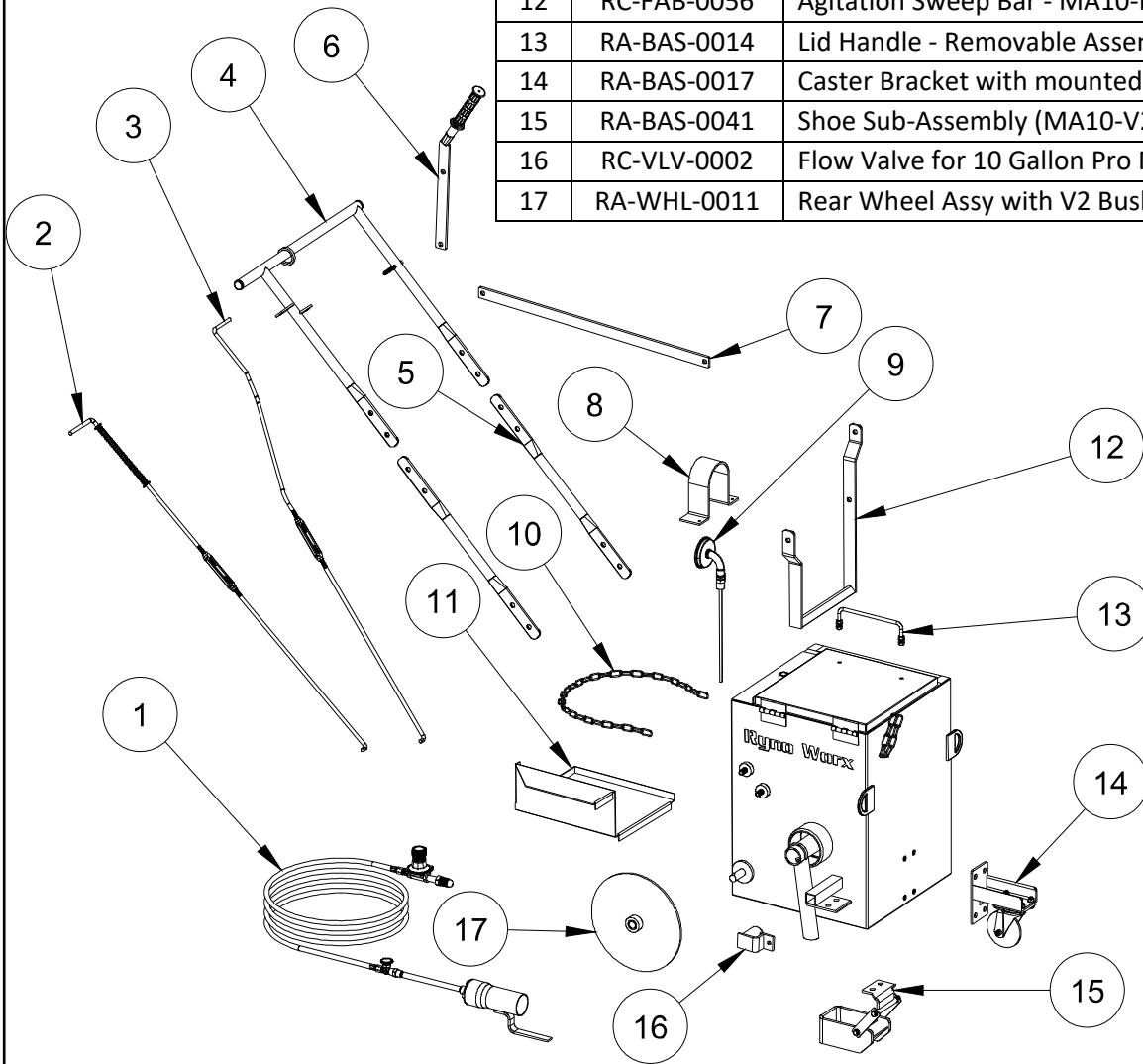


No	P/N	Description
1	RA-GCM-0015	Torch Complete Assembly
2	RA-BAS-0031	Valve Control Arm Assembly (MA10- V2)
3	RA-BAS-0030	Shoe Control Arm Assembly (MA10-V2)
4	RC-FAB-0052	Upper Handle Bar - 10 Gal MA - Drip Guard Version
5	RC-FAB-0003	Lower Handle Bar - 10 Gallon Melter Applicator
6	RA-GCM-0066	On the Fly Agitation - Handle with Grip
7	RC-FAB-0054	On-the-Fly Agitation Horizontal Connection Bar
8	RC-FAB-0010	Thermometer Guard Bracket
9	RC-GCM-0010	Thermometer - 14" Probe - Shock Proof Liquid Filled
10	RC-FAB-0009	Propane Tank Securing Chain
11	RC-FAB-0030	Tank Shelf - 10 Gallon Torch Style Melter Applicator
12	RC-FAB-0056	Agitation Sweep Bar - MA10-Pro-V3
13	RA-BAS-0014	Lid Handle - Removable Assembly (10 Gallon MA)
14	RA-BAS-0017	Caster Bracket with mounted Caster Sub-Asy (Left)
15	RA-BAS-0041	Shoe Sub-Assembly (MA10-V2)
16	RC-VLV-0002	Flow Valve for 10 Gallon Pro Melter - Version 2
17	RA-WHL-0011	Rear Wheel Assy with V2 Bushing - Melter Applicator



RynoWorx

MPN:
RA-MLT-0006

Model:
RY10MA

Description:
10 Gallon Direct Fire Melter Applicator Torch Model

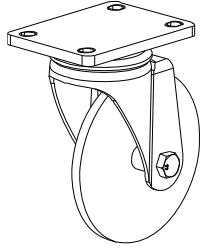
RA-WHL-0011 - Rear Wheel with V2 Bushing



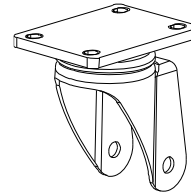
RC-WHL-0010 - Rear Wheel Brass Bushing - V2



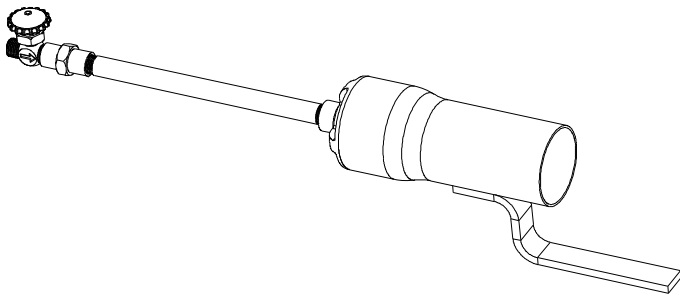
RA-WHL-0005 - Front Caster with Wheel



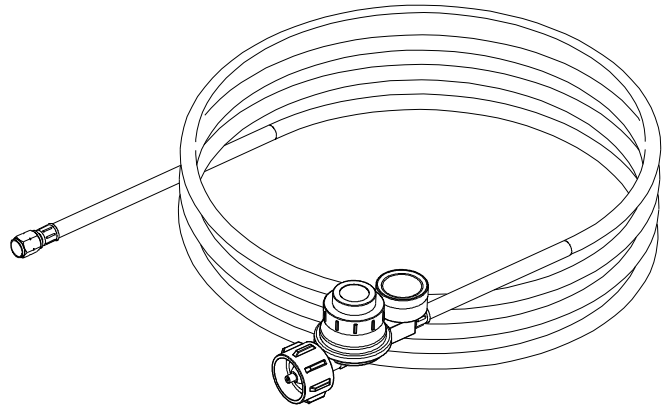
RC-WHL-0014 - 4 Bolt Caster Swivel



RC-GCM-0016 - Torch for Melter Applicator with Valve



RC-GCM-0068 - Regulator and Hose with Pressure Gauge (10 ft/ 3 m)



RC-STK-0001 - Flint Striker

